

# 263 PROPERTY ASSESSMENT RECORD TOWN OF PORTAGE

CARD OF CARDS

MAP <b>11</b>	LOT <b>8</b>	ROAD <b>656 West Road</b>	SINGLE FAMILY	RESIDENTIAL	SUMMARY			
			TWO FAMILY	SEASONAL				
		OWNER	APARTMENT	OTHER			13	LAND <b>30300</b>
				NEIGHBORHOOD	20	BLDGS. <b>18400</b>		
RECORD OF OWNERSHIP			DATE	BK	PG	RET ST	21	TOTAL <b>48700</b>
<u>Townsend, Eugenia</u>			<b>2/5/2002</b>	<b>3168</b> <b>3612</b>	<b>247</b>	<b>2001 - New Tree Circle</b>	20	LAND <b>30,300</b>
<u>Bradbury, Randi J</u>			<b>9/30/20</b>	<b>6074</b>	<b>73</b>		20	BLDGS. <b>20,800</b>
							20	TOTAL <b>51,100</b>
							20	LAND
							20	BLDGS.
							20	TOTAL
							20	LAND
							20	BLDGS.
							20	TOTAL
							20	LAND
							20	BLDGS.
							20	TOTAL
							20	LAND
							20	BLDGS.
							20	TOTAL
							20	LAND
							20	BLDGS.
							20	TOTAL
							20	LAND
							20	BLDGS.
							20	TOTAL
							20	LAND
							20	BLDGS.
							20	TOTAL
							20	LAND
							20	BLDGS.
							20	TOTAL
							20	LAND
							20	BLDGS.
							20	TOTAL
							20	LAND
							20	BLDGS.
							20	TOTAL
							20	LAND
							20	BLDGS.
							20	TOTAL
							20	LAND
							20	BLDGS.
							20	TOTAL
							20	LAND
							20	BLDGS.
							20	TOTAL
							20	LAND
							20	BLDGS.
							20	TOTAL
							20	LAND
							20	BLDGS.
							20	TOTAL
							20	LAND
							20	BLDGS.
							20	TOTAL
							20	LAND
							20	BLDGS.
							20	TOTAL
							20	LAND
							20	BLDGS.
							20	TOTAL
							20	LAND
							20	BLDGS.
							20	TOTAL
							20	LAND
							20	BLDGS.
							20	TOTAL
							20	LAND
							20	BLDGS.
							20	TOTAL
							20	LAND
							20	BLDGS.
							20	TOTAL
							20	LAND
							20	BLDGS.
							20	TOTAL
							20	LAND
							20	BLDGS.
							20	TOTAL
							20	LAND
							20	BLDGS.
							20	TOTAL
							20	LAND
							20	BLDGS.
							20	TOTAL
							20	LAND
							20	BLDGS.
							20	TOTAL
							20	LAND
							20	BLDGS.
							20	TOTAL
							20	LAND
							20	BLDGS.
							20	TOTAL
							20	LAND
							20	BLDGS.
							20	TOTAL
							20	LAND
							20	BLDGS.
							20	TOTAL
							20	LAND
							20	BLDGS.
							20	TOTAL
							20	LAND
							20	BLDGS.
							20	TOTAL
							20	LAND
							20	BLDGS.
							20	TOTAL
							20	LAND
							20	BLDGS.
							20	TOTAL
							20	LAND
							20	BLDGS.
							20	TOTAL
							20	LAND
							20	BLDGS.
							20	TOTAL
							20	LAND
							20	BLDGS.
							20	TOTAL
							20	LAND
							20	BLDGS.
							20	TOTAL
							20	LAND
							20	BLDGS.
							20	TOTAL
							20	LAND
							20	BLDGS.
							20	TOTAL
							20	LAND
							20	BLDGS.
							20	TOTAL
							20	LAND
							20	BLDGS.
							20	TOTAL
							20	LAND
							20	BLDGS.
							20	TOTAL
							20	LAND
							20	BLDGS.
							20	TOTAL
							20	LAND
							20	BLDGS.
							20	TOTAL
							20	LAND
							20	BLDGS.
							20	TOTAL
							20	LAND
							20	BLDGS.
							20	TOTAL
							20	LAND
							20	BLDGS.
							20	TOTAL
							20	LAND
							20	BLDGS.
							20	TOTAL
							20	LAND
							20	BLDGS.
							20	TOTAL
							20	LAND
							20	BLDGS.
							20	TOTAL
							20	LAND
							20	BLDGS.
							20	TOTAL
							20	LAND
							20	BLDGS.
							20	TOTAL
							20	LAND
							20	BLDGS.
							20	TOTAL
							20	LAND
							20	BLDGS.
							20	TOTAL
							20	LAND
							20	BLDGS.
							20	TOTAL
							20	LAND
							20	BLDGS.
							20	TOTAL
							20	LAND
							20	BLDGS.
							20	TOTAL
							20	LAND
							20	BLDGS.
							20	TOTAL
							20	LAND
							20	BLDGS.
							20	TOTAL
							20	LAND
							20	BLDGS.
							20	TOTAL
							20	LAND
							20	BLDGS.
							20	TOTAL
							20	LAND
							20	BLDGS.
							20	TOTAL
							20	LAND
							20	BLDGS.
							20	TOTAL
							20	LAND
							20	BLDGS.
							20	TOTAL
							20	LAND
							20	BLDGS.
							20	TOTAL
							20	LAND
							20	BLDGS.
							20</	

*Aug Friday*

**CONSTRUCTION**

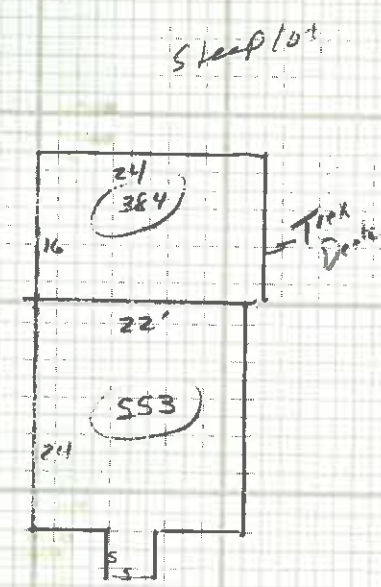
**REMODELING DATA**

**SKETCH**

1 FOUNDATION		G	F	P	6	FLOORS						
CONCRETE						B	1	2	3	G	F	P
CONC BLOCK					CONCRETE							
CONC SLAB					EARTH							
BRICK OR STONE			✓		PINE <i>wood</i>		✓				✓	
PIERS					HARDWOOD							
2 BASEMENT					INLAID							
FULL HR					W/W CARPET							
1/4	1/2	3/4			CERAMIC							
FIN BSMT AREA					SINGLE							
BSMT GAR												
FRAMING					ATTIC FLR & STAIRS							
FLR JOISTS												
X			O/C		7 INTERIOR FINISH							
BEAMS & COL						B	1	2	3	G	F	P
STUDS					PLASTER							
3 WALLS					DRYWALL							
DOUBLE SIDING			✓		PANEL <i>Panel</i>		✓				✓	
SINGLE SIDING					KNOTTY PINE							
SHINGLES					WALLBOARD							
CONC BLOCK					UNFIN							
FACE BRK ON					FINISH ATTIC AREA							
SOLID COM BRK												
INSULATION					8 HEATING					M	O	
ATTIC ONLY					HOT AIR							
ROOFING					HOT WATER/VAPOR							
ASPH SHINGLES					STEAM							
WOOD SHINGLES					AIR COND							
METAL					PIPELESS FURN							
ROLL ROOFING					FLOOR FURN							
LOW ROOF TYPE					AUTO OIL BURNER							
GABLE	✓		FLAT		GAS							
HIP			MANSARD		ELECTRIC							
GAMBREL					NO HEATING							
4 LIGHTING					UNIT HTRS							
NO ELEC												
OUTLETS					9 PLUMBING					M	O	
WIRING					BATHROOM							
5 FIREPLACES					TOILET ROOM							
# OF STACKS					WATER CLOSET							
FIREPLACE STACK					LAVATORY							
FIREPLACE					STALL SHOWER							
HEARTH					KITCHEN SINK							
NO OF ROOMS					AUTO WATER HEATER							
BSMT	1ST				NO PLUMBING							
2ND	3RD											
INT LAYOUT												

STRUCTURAL		YEAR	COST
KITCHEN			
ELECTRICAL			
PLUMBING			
HEATING			
COMPUTATIONS			
UNIT	AMOUNT		
553 SF	46228		
BSMT AREA	-2228		
BSMT GAR			
WALLS			
INSULATION			
ROOFING			
LIGHTING			
FIREPLACES			
FLOORS			
ATTIC			
INT FINISH			
HEATING	-1657		
PLUMBING			
TOTAL	41804		
ADDITIONS & PCHS			
1	SF		
2	SF		
3	SF		
4	SF		
5	SF		
6	SF		
7	SF		
8	SF		
9	SF		
TOTAL		41804	
FACTOR	-30	57	
FIN BSMT			
REPL VALUE			
		23828	
OCCUPANCY	CONSTRUCTION	SIZE	AREA
	15 F/1 P	553	553
OUT BLDGS.			
1 Van Box	mt'		
2 Tux Deck		16x24	384
3			
4			
5			
6			
7			
8			

SPLIT LEVEL		RANCH	GARRISON	CAPE	MODULAR	CUSTOM	
DATE	MO.	YR.	TYPE 1. LAND 2. L & B 3. BLDG	SALE PRICE	SOURCE 1. BUYER 2. SELLER	3. DECL. 4. AGENT	DATE LISTED
			1 2 3		1 2 3 4		MEAS
			1 2 3		1 2 3 4		PRICED
INTERIOR CONDITION COMPARED TO EXTERIOR				+	=	-	REV'D.
OBSOLESCENCE FACTORS							
SURPLUS CAPACITY		ENCROACHMENTS	PLUMB & HEAT	UNFINISHED			
STYLE		COMM. LOCATION	ECONOMIC				
OCCUPANCY	CONSTRUCTION	SIZE	AREA	GRADE	AGE	REMOD	COND
	15 F/1 P	553	553	D-30			
REPL VAL	PHYS DEP	PHYS VAL	OBSQL	SOUND VALUE			
23828	25	17,871	-	17,871			
2953	2	2894		NV 2894			



TOTAL VALUE BUILDINGS **20,765**